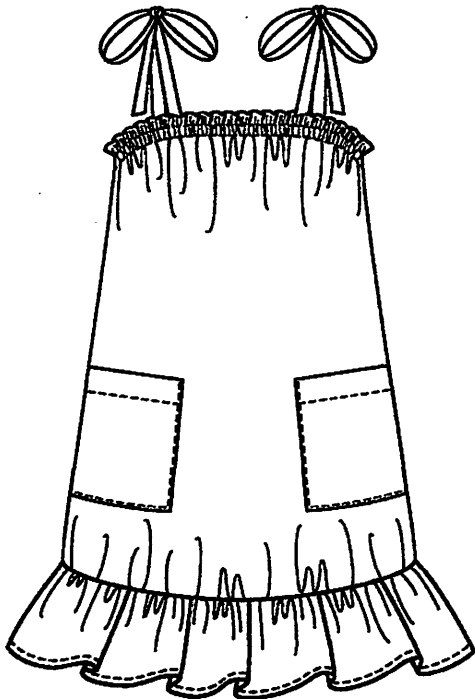


Sun Dress

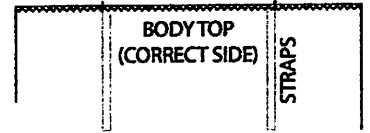
(Size 7-8)

NEED: ~1 Yard Fabric
 ~3/8" or 1/2" Elastic
 ~Single Needle Machine
 ~Serge

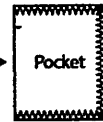


SEWING INSTRUCTIONS:

- 1. Serge:** ~Straps - Wrong sides all around except one end. Flip inside out & press.
 ~Body - Top - including straps (align open ends to notches).
 ~Ruffles - Short sides together, then bottom edge.



- ~Pockets - All around except notched sides.



2. Single Needle:

- ~Body - Fold top 2" & stitch 3/4" from top edge including straps. Stitch another row 1 1/2" from top edge for elastic casing.
 ~Pockets - 1" hem (top).
 ~Ruffle - 1/4" hem

4. Press:

- ~Body, Pockets & Ruffle



5. Single Needle:

- ~Ruffle - 1/4" on the edge (opposite hem) using loose tension & largest stitch length.
 ~Pull one side of the stitched thread to gather fabric (to body width).
Or ~Serge - Adjust setting to gather ruffles (to body width).
 ~Pockets - Attach to body sides (align to notches).

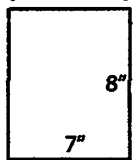
6. Elastic:

- Insert elastic into casing and pin elastic ends to fabric to keep in place.

7. Serge:

- ~Ruffle (gathered edge) to Body (bottom).
 ~Body Sides - Wrong sides together including pockets.

POCKET (OPTIONAL)



CUT: 7" X 8"

CUT MEASUREMENTS

*Elastic ~ Cut 19"

2 3/4"	STRAP	2 3/4" X 20"		
2 3/4"	STRAP	2 3/4" X 20"	STRAP	2 3/4" X 20"
3 1/2"			RUFFLE	3 1/2" X 60"
3 1/2"			RUFFLE	3 1/2" X 60"
22"		BODY		BODY
		30"		30"
				34 1/2"

60"